

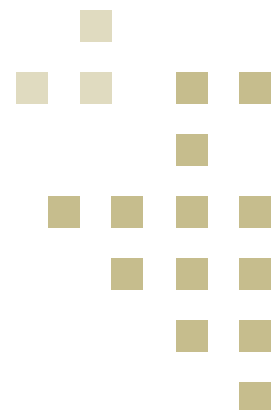


[623] Paper

Geography and growth – some empirical evidence

Per Botolf Maurseth

No. 623 February – 2002



Utgiver: NUPI
Copyright: © Norsk Utenrikspolitisk Institutt 2002
ISSN: 0800 - 0018

Alle synspunkter står for forfatterens regning. De må ikke tolkes som uttrykk for oppfatninger som kan tillegges Norsk Utenrikspolitisk Institutt. Artiklene kan ikke reproduseres - helt eller delvis - ved trykking, fotokopiering eller på annen måte uten tillatelse fra forfatterne.

Any views expressed in this publication are those of the author. They should not be interpreted as reflecting the views of the Norwegian Institute of International Affairs. The text may not be printed in part or in full without the permission of the author.

Besøksadresse: Grønlandsleiret 25
Adresse: Postboks 8159 Dep.
0033 Oslo
Internett: www.nupi.no
E-post: pub@nupi.no
Fax: [+ 47] 22 17 70 15
Tel: [+ 47] 22 05 65 00

Geography and growth – some empirical evidence

Per Botolf Maurseth

[Abstract] Income in the world does not distribute randomly in space. There are geographic clusters of rich and poor countries. Also growth rates tend to be spatially clustered. Spatial regression analyses indicate that geographical clustering may be an inherent ingredient in growth mechanisms: Growth in one country stimulates growth in surrounding countries. A simple exogenous growth model with technology diffusion through trade in capital goods can account for some, but not all of these empirical patterns of growth and income distribution.

This paper has been prepared as a part of the project *Globalisation – convergence or agglomeration?* sponsored by the Norwegian Research Council. I thank Sam Kortum, Hildegunn Ekroll Stokke, Leo Andreas Grünfeld and Arne Melchior for valuable comments. I also thank participants at the seminar *Globalization and Marginalization* in Bergen, June 8.-9., 2001, for valuable discussions.

Correspondence: The Norwegian Institute of International Affairs, P.O. Box 8159 Dep., N-0033 Oslo.
E-mail: PerB.Maurseth@nupi.no.

1. Introduction

It is common knowledge that world economic activity is clustered. Within countries one often observes that some sets of adjacent regions prosper while others stagnate. In the world economy, clustering is also distinct: Most people know that North is richer than South, that Africa is poorer than Europe and that Latin America is poorer than North America. The clustered economic landscape in the world has been subject to surprisingly little research, however. How clustered is the world? Is the clustered global economic landscape stable or changing over time? Has geography become less important as a consequence of economic integration and globalisation? Or is it the opposite?

Almost all economic interactions decrease rapidly with distance. This applies within countries and across countries. Geography influences interaction between pre-located economic agents but also on the location of economic activity. However, both in growth economics and in international economics, the importance of geography was more often than not ignored until a few years ago, in particular in theoretical work.

The influence of geography on economic development stems from the fact that geographical distance imposes cost on transactions. These costs are of different types. Venables (2001) classifies costs of distance into four classes. These are: i) search costs of identifying potential trading partners, ii) direct shipping costs, iii) time used for transportation and communication and iv) control and management costs. Some costs of distance are convex and increasing, some are concave and increasing. A large part of the literature on economics and distance gives support to a constant (negative) elasticity of interaction with respect to distance. This applies to international trade as well as to foreign direct investments and also to various forms of diffusion of technology.

For international trade, the celebrated gravity model has become well-known.¹ The gravity model assumes that trade between pairs of countries increases with the size of each of them (as measured by total GDP) and falls with the distance between them. The gravity model is so successful in terms of explanatory power that it has challenged traditional trade theory based on comparative advantages.

For foreign direct investment there are fewer studies, but the existing ones give geography a very important role in understanding international real investments. In a similar way as in studies of international trade, an iso-elastic negative influence of distance is found in several studies.²

Recently, there has been a set of studies aiming at exploring determinants of international technology flows. Technology flows are harder to measure than international trade and investments. Even so, it is widely believed that technology flows might be as important as the other two for economic growth and the dynamics of world income distribution. Through a variety of approaches, studies of international technology flows support the same conclusion as for trade and investment: distance retards interaction. An important distinction between types of technology flows is whether they are embodied in goods that are due to transactions or whether they are disembodied. Knowledge flows of the first kind refer to the use of products either in consumption or as factors of production developed and produced by others. It is quite natural that embodied knowledge flows are localised to the same extent as the goods that embody them. Disembodied knowledge flows are more diverse. They denote the knowledge available to people and firms without economic transactions as a prerequisite. For disembodied spillovers evidence suggests the same pattern: even if information and communication technology makes it cheaper and easier to reap knowledge developed elsewhere, knowledge flows are nevertheless local in scope.³

The emergence of new growth theory and new economic geography has provided economists with tools for analysing the consequences of the localised pattern of economic interaction.

In new economic geography, focus is on the interplay between increasing returns at the firm level, transportation costs and market size (see Krugman, 1991 or Fujita *et al.*, 1999). These models analyse the interplay between increasing returns, market size, geographical distance and industrial structure. The point of departure is the recognition that increasing returns and transportation costs make market access

¹ Linnemann (1966) is the pioneering study of gravity relations in international trade. A more recent study is Baldwin (1994).

² Brenton and Di Mauro (1999) present evidence for the formerly planned economies. Narvestad (2000) presents results for FDI flows from OECD countries to other countries.

³ Coe and Helpman (1995) is a study of technology diffusion through trade in goods. Jaffe *et al.* (1993) and Maurseth and Verspagen (2002) make use of patent citations as a measure of knowledge flows and find a localised citations pattern.

important. In case of increasing returns, few production sites will save production costs as compared to several sites. Because of transportation costs firm tend to establish themselves in larger markets. If there are industries in which there are decreasing (or constant) returns, smaller countries will tend to specialise in these while larger countries specialise in the increasing returns industry.

An interesting feature of the recent models of economic geography is the ambiguous effects of economic integration. A reduction of transportation costs may reduce the industrial base of peripheral and poor regions when transportation costs are not too low in the first place. The reason is that while reduced transportation costs increase the market access to the centre for the periphery, they also increase the market access in the opposite direction. For high enough transportation costs, the second of these effects may dominate. When transportation costs are low, further reduction might benefit the poorest countries.

Endogenous growth theories attempt at explaining technological progress as an inherent part of economic mechanisms. Knowledge and technology are cumulative, only partially excludable and non-rival goods. Therefore there are externalities, knowledge spillovers, connected to production of knowledge - disembodied or embodied in goods.⁴

If disembodied technology spillovers decrease with geographical distance, neighbours to rich and innovative countries or regions should benefit more from technological spillovers than distant regions. In a bounded landscape of regions, there will be a case for agglomeration in the geographical centre. Many theories of economic growth analyse the case in which growth occurs through invention and introduction of new goods. For production of such goods, availability of a broad knowledge base may be an important determinant for localisation of production. For the use of such goods, income, prices and transportation costs are determinants. Therefore, geography may influence both where production is located and also who gets the benefits of the new goods.

The spread of benefits of technological advances through international trade in capital goods is analysed in Eaton and Kortum (2001a). That model assumes exogenous technological progress and it therefore differs from the spirit of recent growth theorising. On the other hand it yields new insights into the determinants of

diffusion of technological progress. Slight modifications of that model enable it to throw some light on the geographical distribution of income and growth.

The rest of this paper is organised as follows: The next section is devoted to a descriptive analyses of the geographical distribution of growth and income in the world economy. Thereafter, a brief sketch of Eaton and Kortum's model and the small modifications I impose on it are described. In section 4 estimation results are presented. Section 5 concludes by summing up the discussion and outlining possible implications for future research.

3. Geography, income and growth – a description

3.1 Data

For the purpose of this paper, data on GDP per capita and population for 1960 and 1990 were extracted from the Penn World Tables mark 5.6. For that period, the database covers 104 countries. For the empirical model presented and estimated in the next section, use was also made of real investments shares and price indexes for GDP, consumption and investments. The GDP data are in constant international prices and therefore constructed to be comparable over time and across economies. The Penn World Tables have been used in most of the cross-country growth studies cited in this paper. The countries covered by the data are listed in appendix B. There are 37 African, 23 Asian, 21 European and 23 American countries in the sample. Some important countries are not included, like (most of) the formerly planned economies in Eastern Europe, including the former Soviet Union. I also make use of data for average years of school attainment in 1985. These data are taken from Barro and Sala-i-Martin (1995). Use of these 'conditioning' data reduces the data set to 78 observations.

Figures 1 and 2 are box-and-whisker plots of GDP per capita levels in 1960 and 1990 and growth rates over the same period for each continent.⁵ The boxes in the figures indicate the interquartile ranges, that is the range from the 25th percentile to 75th percentile. The lines crossing the boxes are the medians and the 'whiskers' indicate upper and lower adjacent values (defined as the largest (smallest) data point

⁴ For an overview of new growth theory, see Barro and Sala-i-Martin (1995), Aghion and Howitt (1998) or, for implications for international economics, Grossman and Helpman (1991).

⁵ Australia and New Zealand are counted as Asian countries.

less (larger) than the upper (lower) interquartile range times 1.5). Data points more extreme than this are individually plotted.

Figure 1 reveals several facets of the continent-wise income distribution in the world. First, the impression of a world divided in continents seems to be a right one. The median ranges from the poor median African country to the very rich median European country. The distinction of continents explains a fair amount of the spread in GDP levels. The cumulative length of the boxes seems to supply a large fraction of the total distribution. Also, except for Asia in 1990, the lengths of the boxes are overlapping to a limited degree. Second, the figure indicates a world of increasing differences between countries. This applies both for the world as a whole and within each continent. Inequality between countries in GDP per capita was larger in 1990 than in 1960.

Figure 1. Box plot GDP levels, 1960-90

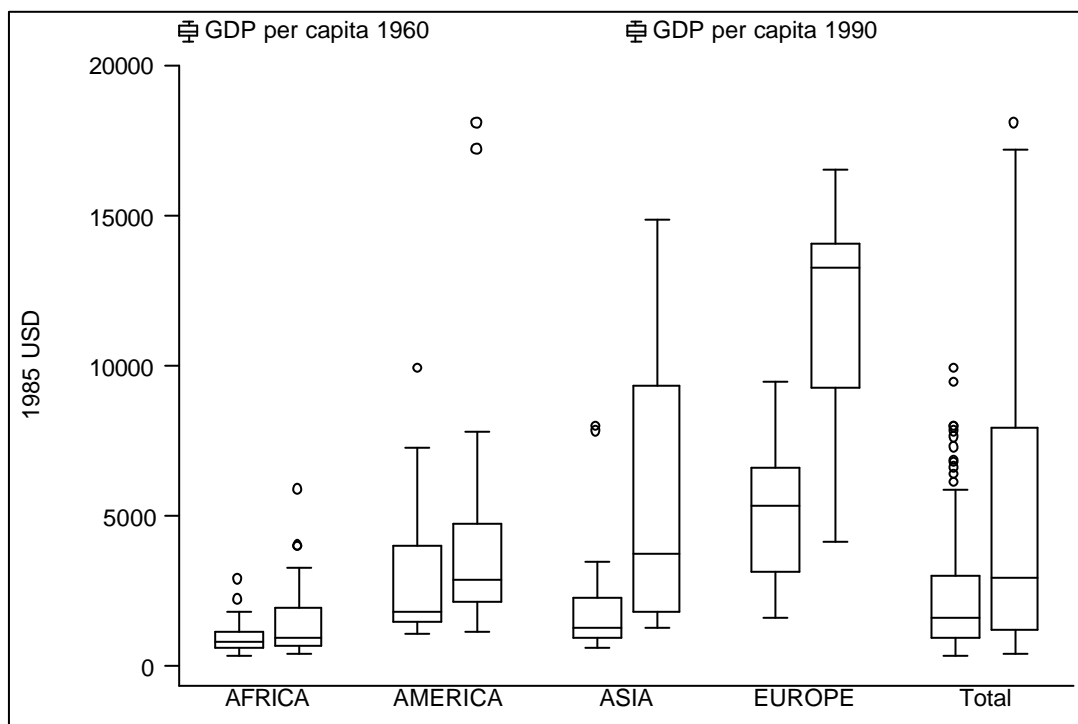
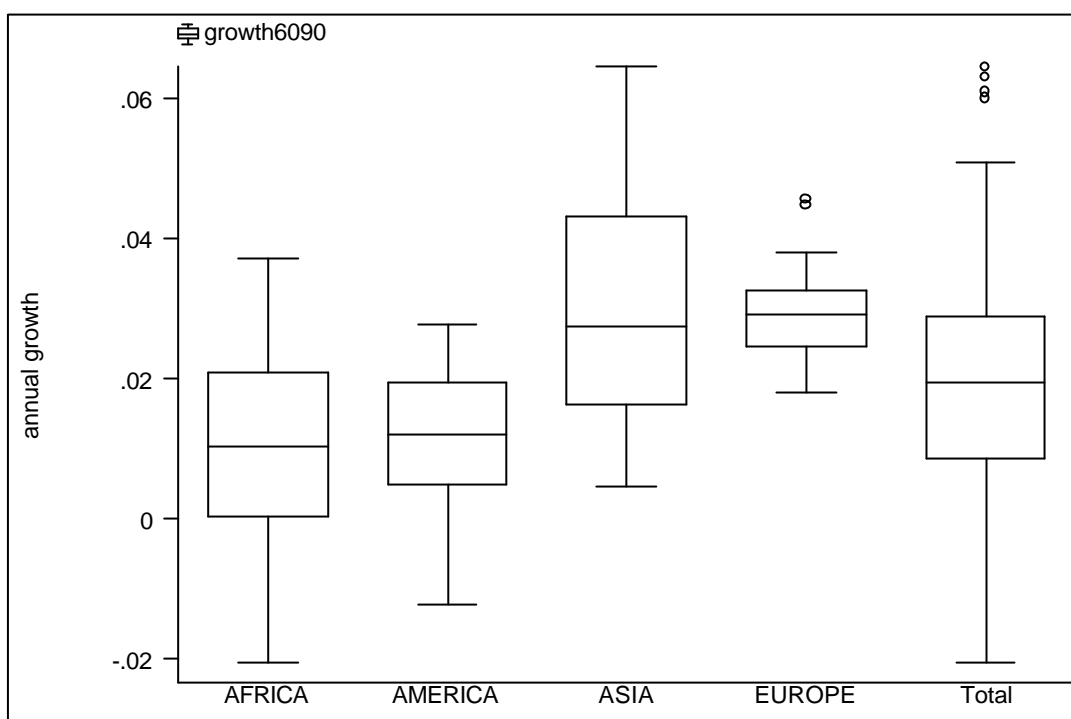


Figure 2. Box plot growth rates, 1960-90



For growth rates, the continental divide is not as suggestive as for levels of GDP per capita. Africa and America seem to do equally well in terms of the median. For Africa, the spread of growth rates is larger than on the American continent. Asia and Europe are forging ahead. Differences between growth rates in Europe are small, while Asia has the largest spread. The growth disasters, countries with negative average growth rates over the 31-year period analysed here, are located (numerous) in Africa and in (Latin) America. It is important to note the large differences in growth rates. The country with the largest negative growth rate had its income per capita level reduced by 47 per cent while the country with the highest growth rate had its income per capita increased more than seven times. In 1960 Bangladesh was richer than South Korea. In 1990 South Korea was 4.8 times as rich as Bangladesh.

3.2 Distance

In growth economics, use of geographical data has been very limited. It has been most common to use the above method with categorical dummy variables for continents. Dummy variables for groups of countries capture common characteristics for countries in each group. Therefore, such dummies are not suitable for detecting the

influence of geography. If geographical distance as such influences the results, Israel and Syria which are Asian, should have more in common with European Greece than with Asian Thailand. Fingleton and McCombie (1998), Attfield *et al.* (2000), Rey (1999) and Maurseth (2001) incorporate full distance matrixes in their analyses of growth (in European regions, countries or American states).

For the purpose of this paper, great circle distances (in miles) between all countries in the data set were calculated by means of the latitude and longitude of the capital in each country. In analyses of geography in general (and for economic growth in particular), the hypothesis is that some variable x in entity i influence some variable y in entity j as a decreasing function of the distance from i to j , d_{ij} . Therefore, a distance weights matrix was constructed according to:

$$w_{ij} = \frac{1/d_{ij}}{\sum_{j=1}^n 1/d_{ij}}$$

The resulting weight matrix postulates that the influence of any variable between two countries decreases with the inverse of the distance between them. The weights are standardised so that they sum to one for each country. This makes it easier to construct weighted averages of variables for countries.⁶

By use of the distance weights, three such weighted averages are constructed. These are the weighted averages of normalised GDP levels for 1960 and 1990 and weighted average of normalised growth rates, 1960-90.⁷ These averages are to be compared with the same numbers for each individual country. Scatterplots of these pair-wise observations indicate the degree of spatial correlation in the world. Figures 3-5 show the results. In all the figures the data points are closer to zero along the x axis than along the y -axis. This is because the x -axis measures averages for several countries. The figures reveal that for all the three variables, the levels in 1960 and 90 and the growth rates, there is a preponderance of observations in the first and third

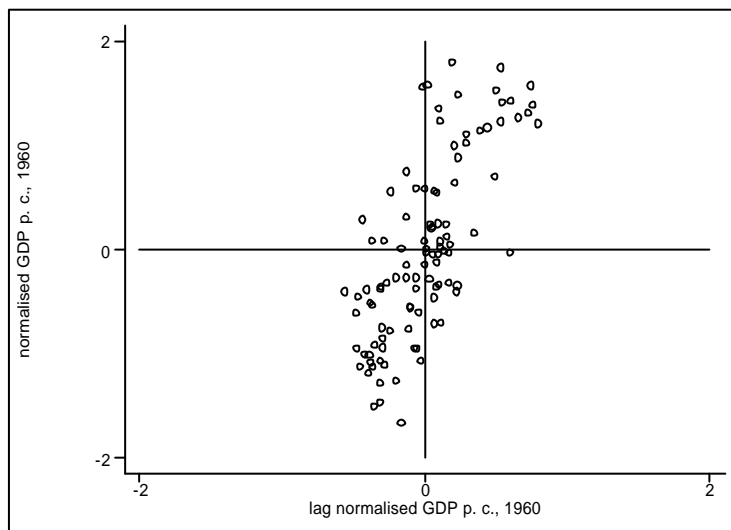
⁶ In the spatial econometrics literature, several other types of distance weights have been proposed, like the one above with distance raised to the power of more than one and contiguity matrixes. The formulation above was chosen for illustrative purposes and because of its simplicity. Results with other weights matrixes are available upon request.

⁷ Therefore, the weighted average of variable X for region i in year t is given by $\sum w_{ij}(X_j - X)$ in which X denotes the average of the X_j s.

quadrant. This means that, generally, high income countries are located near each other and so are low income countries.

Although visually difficult to conclude from the figures, the correlation for GDP levels became stronger over the period so the world was more clustered in 1960 than in 1990.⁸ This indicates that the world is becoming more clustered over time. The increased spatial correlation of GDP per capita is a result of the development shown in figure 5. Growth itself is spatially clustered.

Figure 3. Moran Scatterplot of GDP levels, 1960



⁸ The coefficient of correlation for income levels increased from 0.73 to 0.78 from 1960 to 1990.

Figure 4. Moran Scatterplot of GDP levels, 1990

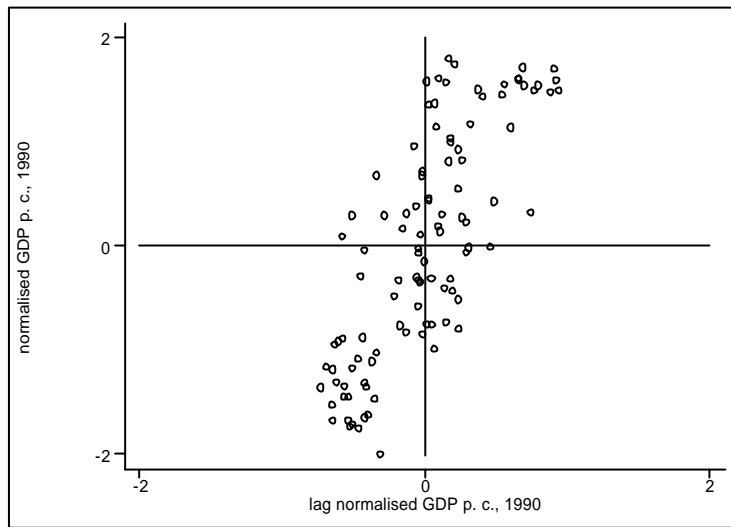
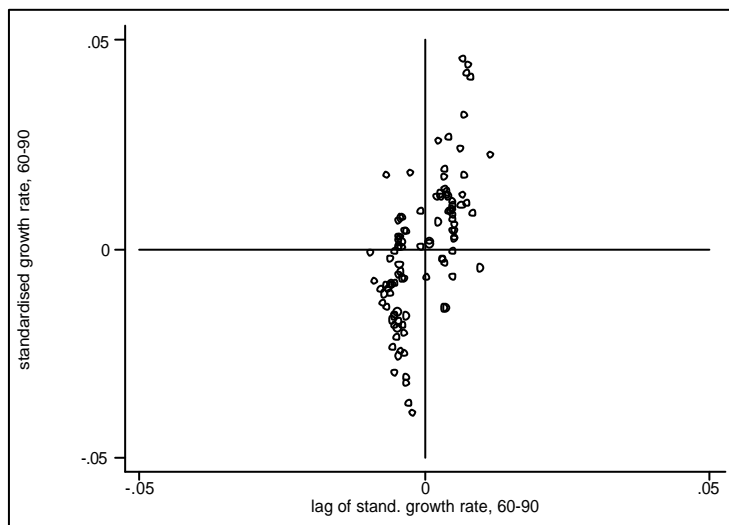


Figure 5. Moran Scatterplot of growth rates, 1960-90



3.3 Investments and human capital

In the empirical investigation below, I will make use of the data on average investment rates for the period 1960 to 1990 and for school attainment. The nature and explanatory power of these data for levels of GDP and growth are explored at length elsewhere. Their geographical distribution is not, however. Table 1 below

presents Moran's I and its significance for the data used in this lecture. Moran's I is a widely used measure of spatial dependence. Its definition is described in appendix A.

Table 1. Moran's I for data used (p values in parantheses).

	<i>104 countries</i>	<i>78 countries</i>
<i>growth</i>	0.20 (0.000)	0.22 (0.000)
<i>ln(gdp60)</i>	0.27 (0.000)	0.23 (0.000)
<i>ln(gdp90)</i>	0.30 (0.000)	0.27 (0.000)
<i>ln(invest)</i>	0.17 (0.000)	0.09 (0.000)
<i>ln(school)</i>		0.16 (0.000)

4. Geography, income and growth – an empirical model

4.1 The modelling framework

Eaton and Kortum (2001a) present a model of trade based on geography and technological advantage. In this section it is demonstrated that modifications and simplifications make their model consistent with empirical observations on the geographical distribution of income and growth. It should be noted that Eaton and Kortum's model has richer empirical implications than the version presented here. They use estimates of cost levels together with data on trade, geography and income in a more detailed empirical study for a smaller sample of countries. For the purpose of this paper, the aim is to modify their model to a larger data set for which there are observations on a few variables only. Only a rough sketch of the model is provided here. The interested reader should confer the original paper in which the model is developed and Maurseth (2002) for a more detailed discussion of the model.

The model is for a set of countries with two separate main sectors: production of consumption goods and capital goods. Both sectors use a set of heterogeneous capital goods (a CES aggregate) and labour according to a Cobb-Douglas production function. Consumption and capital goods are traded between the countries. Trade between countries is costly and costs increase with the distance between a pair of

countries. The costs are modelled as iceberg costs that increase with distance according to $t_{ni} = d_{ni}^\varphi > 1$. That is, t_{ni} units of a good have to be shipped from the exporting country i if the importing country n is to receive one unit. Distance is normalised so that $d_{nn} = 1$. The parameter φ is assumed to indicate concavity in transportation costs, so that $0 < \varphi < 1$.

Capital goods are available in different qualities and technology progresses exogenously in terms of increased quality of the distinct capital goods. Technology diffuses through trade in capital goods. Countries with low levels of technology specialise in production of consumption goods while countries with high levels of technology specialise in production of capital goods.

Quality, z_{ij} , of capital good j produced in country i is the realisation of a random variable drawn from a type II extreme value distribution, $P[z_i \leq z] = \exp(-T_i z^\theta)$. The country specific parameter, $T_i > 0$, in this distribution represents the country's stock of technological knowledge. This parameter determines the average quality in country i . Another parameter, common to all countries, $\theta > 1$, reflects the inverse of the variability in quality. The stock of knowledge grows in each country at a constant rate, g . I assume that unit costs of production are equal to one in each country. There is free competition so that costs determine prices. If country n were to buy capital good j from country i it would therefore cost d_{ni}^φ / z_{ij} in terms of efficiency units of capital. Country n will actually buy this good from country i only in the case that this cost is the lowest available, so actual costs are $P_{nj} = \min_i \{d_{ni}^\varphi / z_{ij}\}$. The distribution of actual prices inherits the functional form of the extreme value distribution. Under the above assumptions, therefore, it can be shown that the fraction of capital goods that country n buys from country i is given by:

$$1) \quad p_{ni} = \frac{T_i d_{ni}^{-qj}}{\sum_{i=1}^N T_i d_{ni}^{-qj}} = \frac{T_i d_{ni}^{-qj}}{\Phi_n}, \quad \Phi_n \equiv \sum_{i=1}^N T_i d_{ni}^{-qj}$$

An exact price index for capital goods will be given by:

$$2) \quad P_{kn} = g \Phi_n^{-1/q}$$

where γ is a constant.⁹ In steady state, the price index falls at the rate $g=g_T/\theta$.

4.2 GDP levels

In Eaton and Kortum (2001a and b) the implications for trade, the price indexes and productivity as a function of prices on capital goods are explored. In this paper, two other implications of the model will be investigated. The first relates to production per capita. As demonstrated by Eaton and Kortum (2001a), the steady state GDP per capita in country is given as a function of investment rates, the price index of capital goods and the consumer price index. The exact formulation for this expression is:

$$3) \quad y_n = \left(\frac{s_n}{\left(\frac{g}{1-a} \right) \left(\frac{P_{kn}}{P_{cn}} \right)} \right)^{\frac{a}{1-a}} = \left(\frac{s_n P_{cn}}{g \left(\frac{g}{1-a} \right)} \right)^{\frac{a}{1-a}} \left(\sum_{i=1}^N T_i d_{ni}^{-jq} \right)^{\frac{a}{q(1-a)}}$$

Above, P_{cn} denotes the consumer price index in country n and α is capital's share in production. s_n represents country n 's saving rate.

The first equation in 3) expresses that the level of GDP per capita is an increasing function of the savings rate and a decreasing function of the relative price of capital. In the second equation, the formula for the price index of capital is inserted. In that expression, therefore, the level of GDP per capita is an increasing function of the savings rate, the consumer price index and an invertedly distance weighted function of the level of technology in all countries.

So far, the level of knowledge in each country, T_i , has not been defined. In growth literature, knowledge stocks are often defined as accumulated R&D or as GDP per capita level. For global data, accumulated R&D data are not available and if they were, they would probably not be very useful for poor countries. GDP per capita levels as proxy for knowledge stocks assume that small rich countries have the same technological level as large rich countries. This is a doubtful assumption, at least in the present context in which knowledge stocks in country i enter in the expression for the share of what country n buys from country i . Here I propose to use total level of

⁹ This price index is valid under some assumptions only, outlined in Eaton and Kortum (2001b) and Maurseth (2002).

GDP in a country as an approximation for knowledge stocks. This implies that a small rich country might have the same knowledge stock as a large poorer country. This assumption is in line with the growth models of Frankel (1962) and Romer (1986).¹⁰ With use of this definition of a country's knowledge stock, GDP per capita in a country becomes a function of total GDP in all countries and the distance between the country in question and all other countries. This definition is parallel to the definition of market potential in the economic geography literature. The empirical counterpart of this literature often presumes a formulation of market potential where the products of the parameters θ and ϕ are equal to one. Here I follow in this tradition and impose that restriction. This is a rough approximation, but it has the benefit of simplifying estimation.¹¹ It is important, however, that the underlying theory in this case does not relate to a country's export markets (like in models of economic geography) but rather to the geography of the origin of its imports.

Taking logs, imposing the above restrictions and solving for the log of GDP per capita gives the log of income per capita as the linear regression equations:

$$\begin{aligned}
 4) \quad \ln(y_n) &= \mathbf{X}_n \mathbf{d} + \frac{\mathbf{a}}{1-\mathbf{a}} \ln(s_n) - \frac{\mathbf{a}}{1-\mathbf{a}} \ln\left(\frac{P_{kn}}{P_{cn}}\right) + \mathbf{e}_n \\
 &= \mathbf{X}_n \mathbf{d} + \frac{\mathbf{a}}{1-\mathbf{a}} \ln(s_n) + \frac{\mathbf{a}}{1-\mathbf{a}} \ln(P_{cn}) + \frac{\mathbf{a}}{\mathbf{q}(1-\mathbf{a})} \ln\left(\sum_{i=1}^N T_i d_{ni}^{-1}\right) + \mathbf{e}_n
 \end{aligned}$$

In equation 4), \mathbf{X} is a set of conditioning variables (including a constant term) and δ is its coefficient vector. ε_n is an error term. The first equality in equation 4) describes the (log of) GDP per capita in a country as a function of the conditioning variables, the country's savings rate and the relative price of capital. In the second equality, the theoretical index for the price index of capital is inserted. In the estimations reported below, equation 4) will be estimated with and without (log of) investment rates, and the conditioning variables will experimentally include continental dummies and, on the smaller data set, (the log of) human capital.

¹⁰ Also, use of total GDP-levels as technology proxy makes the bilateral trade flows in the model consistent with the gravity model of international trade.

¹¹ Cf. for instance Dicken and Lloyd (1990)

4.3 Growth

Growth is the result of exogenous increase in the quality of capital goods. Therefore, the direct consequence is that the price index of capital goods falls at the rate g . Denote steady state growth in per capita income by g . This is the growth rate where consumption grows at the same rate as income. Then expenditure on investments also grows at the same rate as income. The price of capital falls at the rate g so real investments grow at the rate $g + g$. Since capital's share is assumed to be α , we have $g_y = \alpha g_T / \theta(1 - \alpha)$. By differentiating equation 3) with respect to time, solving for g_{yn} (which occurs on both sides of the equation (also in the sum at the right hand side)), we get the expression for the growth rates in country n :

$$4) \quad g_{yn} = \frac{\dot{y}_n}{y_n} = \frac{\sum_{i \neq n}^N g_{yi} T_i d_{ni}^{-1}}{\sum_{i \neq n}^N T_i d_{ni}^{-1}}$$

Now, growth in country n is expressed as a weighted average of growth rates in all other countries with weights depending on these countries' importance in trade with country n . Therefore equation 4) is a spatial lag model of growth rates. In this case the lags are not functions of distance alone, but on the product of total GDP in the other countries and the inverse of the distance between country n and the other countries. The formulation expresses the hypothesis that growth in other countries translates into growth in country n with a coefficient that corresponds to that country's market potential.

Since countries seldom are in their assumed steady state, but instead are supposed to approach it, other variables will be included in the growth regression. One variable is the convergence term, as indicated by the (log of) initial GDP. This variable is often included in growth regressions in order to capture the speed of convergence towards steady state. Because of errors of measurement and random shocks in the distribution, this interpretation might be wrong, however.¹² Included are also (log of) real investments rates and (log of) the human capital variables for some of the regressions. In addition, dummy variables for continents will be included. The growth equation to be estimated is therefore:

¹² As emphasised by Friedman (1992) and thoroughly by Quah (1993), a negative relationship between initial GDP per capita and its growth rate may be caused by stochastic disturbance.

$$5) \quad g_{yn} = \mathbf{U}_n \mathbf{h} + \rho W_{MP} g_y + \mathbf{n}_n$$

In equation 5) \mathbf{U} is a set of conditioning variables and η is its coefficient vector. v_n is an error term. ρ denotes the spatial auto-regressive coefficient and W_{MP} denotes the constructed weights used, as given in equation 4) above.

Since equation 5) is a spatial lag model it cannot be estimated by the usual OLS procedure. OLS estimates will be biased and inferences will be incorrect. One therefore has to estimate the model by an auto-regressive estimation procedure that takes into account the spatial lags. The literature proposes two methods. One is to use instrumental variables. The other is to use a maximum likelihood estimation procedure. The second strategy is the one followed here.

The weights following from the theory predict that the lags are decreasing functions of other countries' contribution to country n 's market potential. In the spatial econometrics literature, weights are usually constructed on the basis of distance alone, like the weights introduced in section 3 above. For illustrative purposes, results based on use of these weights will also be presented.

5. Estimation results

Tables 2 and 3 summarise the regression results. The results for levels of GDP per capita are obtained through OLS while the results for growth are obtained through a maximum likelihood procedure by use of the software package Spacestat.¹³

In table 2 results from three sets of regressions are shown. The first set is from regressions when the relative price of capital was used. The second is from regressions when the price index of capital is approximated by the complete market potential, including the country's own total GDP. The model by Eaton and Kortum (as it is presented above) implies that countries' own total GDP should enter market potential without being retarded by distance (as $d_{nn}=1$). Countries are not dimensionless points as this assumption would imply, however. In some studies (as in

¹³ The resulting likelihood function is of the form:

Redding and Venables, 2001) this is taken into account by weighting own total GDP with a measure of average distance within the country. Here, the counter-strategy is followed in the third set of regressions. In these regressions, own GDP was completely left out of the expression of market potential.

The results raise some doubt on the quality of the price indexes used for capital. The relative price of capital alone explains a large amount of the variation of levels in GDP significantly and with the right sign. Also, when investments rates are included, the sign of the relative price of capital is negative (as expected), but not significant. In the other regressions, the sign is positive and significant, which is counter-intuitive.¹⁴

The use of the theory-based price index of capital is more encouraging. The market potential variable is significant in most of the regressions, though naturally larger in magnitude but less significant when own GDP is left out. The crude measures of market potential used here explain about one third of variation in income levels for countries. The table also supports the hypothesis that investments in real (not robust) and human capital (robust) are important for income. It is important, however, that regression results like the ones above do not reveal the direction of causality.

It should be noted that the finding that market potential significantly influences on income levels is robust to inclusion of continental dummies, in the sense that significance levels (at or) below 0.10 are maintained. The result that market potential is important for income levels is therefore not driven entirely by the continental divide of income as illustrated in figure 1.

$L = \sum \ln(1 - \mathbf{r}\mathbf{v}_i) - N/2 \ln(2\mathbf{p}) - N/2 \ln \mathbf{s}^2 - (\mathbf{g}_y - \mathbf{r}\mathbf{W}\mathbf{g}_y - \mathbf{Z}\mathbf{g})(\mathbf{g}_y - \mathbf{r}\mathbf{W}\mathbf{g}_y - \mathbf{Z}\mathbf{g}) / 2\mathbf{s}^2$ with λ_i as the eigenvalues of \mathbf{w} , the spatial weights matrix used, \mathbf{s}^2 the error variance, \mathbf{g} denotes growth and \mathbf{Z} denotes all explanatory variables. See e.g. Anselin (1988) or Anselin (1992).

¹⁴ These results are in line with those obtained by Eaton and Kortum (2001a). It should be noted that the predicted correlation between the price index of capital and the expression for market potential is

Table 2. Estimation results for levels of (log of) GDP per capita, 1990. Heteroscedasticity-consistent p values in paranthesis.

Price Index of Capital				
ln(P_k/P_c)	-1.42 (0.000)	-0.28 (0.354)	0.57 (0.064)	0.62 (0.032)
ln(inv.60-90)		0.98 (0.000)	0.62 (0.014)	0.55 (0.023)
ln(school 85)			1.52 (0.000)	1.07 (0.000)
Continents				Yes
R ²	0.42	0.52	0.69	0.79
n	104	104	78	78
Compl. Market Potential				
ln(MP90)	0.41 (0.000)	0.25 (0.000)	0.18 (0.000)	0.13 (0.003)
ln(inv.60-90)		0.63 (0.000)	0.02 (0.883)	0.01 (0.949)
ln(P_c)		0.64 (0.000)	0.40 (0.006)	0.33 (0.120)
ln(school 85)			1.05 (0.000)	0.80 (0.001)
Continents	No	No	No	Yes
R ²	0.36	0.70	0.77	0.81
n	104	104	78	78
External Market Potential				
ln(MP90)	1.24 (0.000)	0.56 (0.001)	0.46 (0.001)	0.28 (0.100)
ln(inv.60-85)		0.82 (0.000)	0.13 (0.489)	0.07 (0.693)
ln(P_c)		0.42 (0.005)	0.23 (0.145)	0.33 (0.111)
ln(school85)			1.16 (0.000)	0.81 (0.001)
Continents	No	No	No	Yes
R ²	0.30	0.63	0.75	0.80
n	104	104	78	78

Note: Continental dummies are for Africa, Latin America, North America, Asia, Europe and Oceania.

Table 3 presents results from regressions of growth rates on different explanatory variables. By and large, the results support the hypothesis that growth in one country is contagious to the country's neighbours. The auto-regressive coefficient is positive and significant in most of the regressions. This applies when conditioning variables are included and when continental dummies are included. Inclusion of continental dummies is a severe test for the influence of geography: The results do not only reflect different conditions for growth in the different continents in the world.

present and significant. The coefficient of correlation is -.37 and in a linear regression, the obtained coefficient is -.36 and highly significant.

They indicate that even when continental factors are controlled for, the contagious effect of growth is still present.

The result on geography is not robust, however, for inclusion of a dummy variable for the East Asian miracles. In the smaller data set with all the conditioning variables included, the spatial lag effect disappears altogether. It is not obvious what to conclude from this result. If one succeeded in identifying all clusters in the world, the auto-regressive coefficient would not be significant. Including the tiger economies is the same as inclusion of one very important cluster.¹⁵ In the lower part of table 3, I have included estimation results when the inverse weight matrix presented in Section 3 was included instead of the one based on elements of market potential. The results suggest that the auto-regressive coefficient is large and significant when weights are based on distance alone.

The other results in table 3 are in line with several other regression-based studies of growth and its determinants: Investment in real and human capital correlates positively and most often significantly on economic growth per capita. Again the warning about direction of causality applies. The initial level of GDP per capita is unrelated to growth when no other variables are included and negatively and significantly when additional explanatory variables are included in the regressions. As mentioned, this result does not necessarily imply a trend towards a collapse in the cross-section distribution of income levels across countries.

To demonstrate this point and at the same time demonstrating the importance of distance in the world income distribution, the σ -convergence concept is useful. In contrast to regression-based approaches, studies of the standard deviation of the income distribution reveal (aspects of) the dynamics of world inequality. In most studies use is made of the standard deviation of (the log of) income per capita divided by the world average. In figure 6, the standard deviation of (the log of) income per capita normalised to the world average from 1960 to -90 is shown. The figure indicates strong divergence in the world economy. Figure 6 also graphs the standard deviation of income normalised to the distance-weighted averages presented above. This figure shows a similar, but less pronounced trend. Firstly, differences measured

¹⁵ The constructed weights used are based on the average of total GDP in 1960 and 1990. Using GDP for 1960 increases the significance of the spatial lag to a level below 10 per cent. Using GDP for 1990 reduces the spatial lag even further.

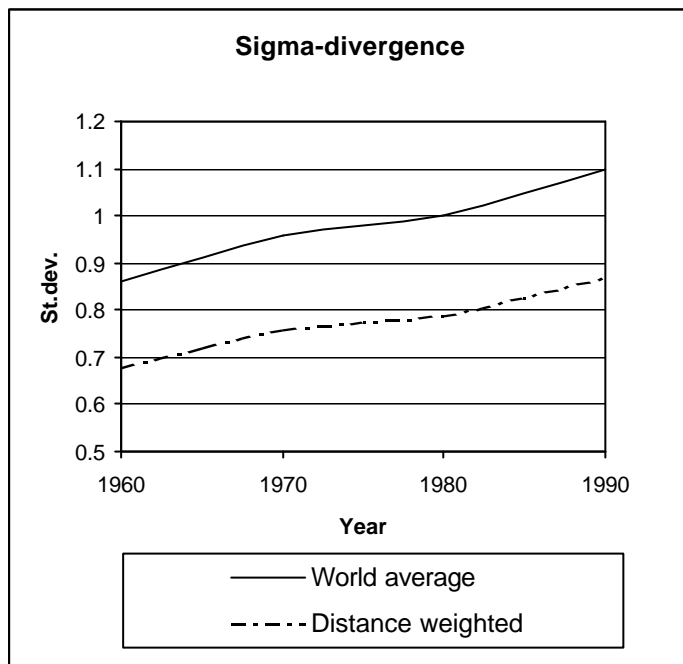
as deviations from distance-weighted neighbours are lower than the unconditional differences. This is a consequence of the clustered global landscape described above.

Table 3. Estimation results for growth in GDP per capita, 1960-90.

Weight=W_{MP}					
l(gdp60)	0.004 (0.020)	-0.003 (0.101)	-0.008 (0.001)	-0.009 (0.006)	-0.007 (0.003)
ln(inv.60-90)		0.015 (0.000)	0.010 (0.003)	0.007 (0.024)	0.005 (0.060)
ln(scho85)			0.014 (0.007)	0.012 (0.011)	0.006 (0.171)
Continents	No	No	No	Yes	Yes
tiger					Yes
r	0.87 (0.000)	0.86 (0.000)	0.86 (0.000)	0.61 (0.000)	0.07 (0.775)
AIC	-565.7	-602.4	-451.38	-466.0	-489.20
n	104	104	78	78	78
Weight=W					
l(gdp60)	0.002 (0.227)	-0.004 (0.007)	-0.005 (0.002)	-0.005 (0.011)	
ln(inv.60-90)		0.014 (0.000)	0.012 (0.000)	0.009 (0.000)	
Continents	No	No	Yes	Yes	
tiger	No	No	No	Yes	
r	0.92 (0.000)	0.90 (0.000)	0.64 (0.001)	0.51 (0.028)	
AIC	-580.1	-615.9	-617.5	-644.1	
n	104	104	104	104	

Note: Continental dummies are for Africa, Latin America, North America, Asia, Europe and Oceania. The tiger economies denote Hong Kong, Indonesia, Japan, Korea, Malaysia, Singapore, Taiwan and Thailand.

Figure 6



Secondly, also differences within the 'clusters' are increasing. Therefore, even if the world is getting more clustered, in the sense of a neater correlation between income in neighbour countries, also differences between neighbour countries are diverging.

4. Conclusions

It is well known that there are large differences in income per capita in the world. Also, it is well known that income per capita does not distribute randomly in space. Rather, rich countries are clustered together and apart from poorer countries. Recent advances in theories on economic growth and economic geography have updated and refined economists' tools for understanding of the clustered economic landscape in the world. In this paper, the dynamics of the geographical income distribution in the world have been discussed. A simple economic model in which technological progress in production of capital goods influences their prices and therefore their productivity as factors of production demonstrates that both income and growth may depend on geography. This result occurs because trade is costly and

costs increase by distance. Therefore, nearby trade partners benefit more from a country's technological progress than distant trade partners. Contagious productivity through trade in capital goods is one possible source of the (static and dynamic) pattern of the geographical distribution of income.

The empirical evidence lends support to two main conclusions: Firstly, other countries' *income* influences income in a country, to a degree which tapers off with the distance between the countries. Secondly, regression-based analyses indicate that geography influences *growth*. Growth performance in a country spills positively over to surrounding countries. This result is robust to continental dummies, but not to special treatment of the cluster of fast-growing East Asian tigers.

Still, the model does not explain all empirical regularities. Firstly, it is not an endogenous growth model. What the estimations imply is that the given growth rates are clustered in space, but there is no explanation for why growth occurs. Secondly, the model does not explain why the world is getting more clustered. In the model, steady state growth rates should be equal among countries but perturbations of the steady states will imply different consequences for countries depending on distance. Economic integration as such (defined as proportional decreases in transport costs) does not influence relative income levels between countries. Still, divergence has been an important ingredient in world economic dynamics for the last three decades.

Lastly, there are many other possible explanations for the observed regularities. Both static models of economic geography and dynamic endogenous growth models of (both embodied and disembodied) technology spillovers give results that are in line with the empirical observations.

References

Aghion, P. and P. Howitt (1998) *Endogenous Growth Theory* MIT Press, Cambridge, Massachusetts.

Anselin, L. (1988) *Spatial Econometrics: Methods and Models*. Kluwer Academic Publishers, Dordrecht.

Anselin, L. (1992) *SpaceStat Tutorial*. Technical Report S-92-1, National Centre for Geographic Information and Analysis, University of California, Santa Barbara.

Attfield, C.L.F, E.S. Cannon, D. Demery and N.W. Duck (2000) 'Economic Growth and Geographic Proximity', *Economics Letters*, 68, 109-12.

Baldwin, R. E. (1994) *Towards An Integrated Europe*. CEPR, London.

- Barro, R. J. and X. Sala-I-Martin (1993) *Economic Growth*. McGraw-Hill, New York.
- Brenton, P. and F. Di Mauro (1999) 'The Potential Magnitude and Impact of FDI Flows to CEECs', *Journal of Economic Integration* 14, 59-74.
- Coe, D. T. and E. Helpman (1993) 'International R&D Spillovers', *European Economic Review*, 39, 859-87.
- Dicken, P. and P. E. Lloyd (1990) *Location in Space – Theoretical Perspectives in Economic Geography*. 3rd edition. Harper Collins Publishers, New York.
- Eaton, J. and S. Kortum (2001a) 'Trade in Capital Goods', *European Economic Review*, 45, 1195-1235.
- Eaton, J. and S. Kortum (2001b) *Technology, Geography and Trade*. mimeo, Boston University, Boston.
- Fingleton, B. and J. S. L. McCombie (1998) 'Increasing Returns and Economic Growth: Some Evidence for Manufacturing from European Union Regions', *Oxford Economic Papers*, 50, 89-105.
- Frankel, M. (1962) 'The Production Function in Allocation and Growth: A Synthesis', *American Economic Review*, 55, 296-319.
- Friedman, M. (1992) 'Do Old Fallacies Ever Die?', *Journal of Economic Literature*, 30, 2129-32.
- Fujita, M, P. Krugman and A. J. Venables (1999) *The Spatial Economy – Cities, Regions and International Trade*. The MIT Press, Cambridge, Massachusetts.
- Grossman, G. and E. Helpman (1991) *Innovation and Growth in the Global Economy*. MIT Press, Cambridge, Massachusetts.
- Jaffe, A. B., R. Henderson and M. Trajtenberg (1993) 'Geographic Localization of Knowledge Spillovers as Evidenced by Patent Citations', *Quarterly Journal of Economics*, 108, 577-98.
- Krugman, P. (1991) *Geography and Trade*. The MIT Press, Cambridge, Massachusetts.
- Krugman, P. and A. J. Venables (1995) 'Globalization and the Inequality of Nations', *Quarterly Review of Economics*, 110, 857-88.
- Linnemann, H. (1966) *An Econometric Study of International Trade Flows*. North Holland Publishing Company, Amsterdam.

Maurseth, P. B. (2002) *An Eaton and Kortum Model of Geography and Growth*. forthcoming as NUPI Working Paper, The Norwegian Institute of International Affairs, Oslo.

Maurseth, P. B. (2001) 'Convergence, Geography and Technology', *Structural Change and Economic Dynamics*, 12, 247-76.

Maurseth, P. B. and B. Verspagen (2002) 'Knowledge Spillovers in Europe – A Patent citations Analysis', *Scandinavian Journal of Economics* forthcoming.

Narvestad, S. O. (2000) *De tidlige planøkonomienes plass i Europa – en undersøkelse av investeringsstrømmer i lys av integrasjonsprosessen*. Masterthesis in Economics, Economics Department, University of Oslo, Oslo.

Penn World Tables mark 5.6 is available at <http://pwt.econ.upenn.edu/>

Quah, D. (1993) 'Galton's Fallacy and Tests of the Convergence Hypothesis', *Scandinavian Journal of Economics*, 95, 427-43.

Redding, S. and A. J. Venables (2001) *Economic Geography and international inequality*, unpublished paper, London School of Economics, London.

Rey, S. J. (1999) *Spatial Empirics for Economic Growth and Convergence*, unpublished paper, Department of Geography, San Diego State University, San Diego.

Romer, P. M. (1986) 'Increasing Returns and Long Run Growth', *Journal of Political Economy*, 94, 1002-37.

Venables, A. J. (2001) *Geography and International Inequalities: the impact of new technologies*, unpublished paper, London School of Economics, London.

Appendix A. Moran's I

Define the weighted average of variable X for region i in year t is given by $\sum w_{ij}(X_j - X)$ in which X denotes the average of the X_j . Moran's I , is defined as $I = (N/S)\{[X'WX]/X'X\}$, where X is the vector of the variable, N is the number of observations, S is the sum of all spatial weights and W is the distance weight matrix. The transformation $z = \{I - E(I)\} / \{V(I)^{1/2}\}$, where $E(I)$ and $V(I)$ is the mean and the variance of I respectively, yields a standard normal variable when the variable in question is itself normally distributed. Confer Anselin (1992).

Appendix B. Countries included in analysis

ALGERIA	JAPAN
ARGENTINA	JORDAN
AUSTRALIA	KENYA
AUSTRIA	KOREA
BANGLADESH	LESOTHO
BELGIUM	LUXEMBOURG
BENIN	MADAGASCAR
BOLIVIA	MALAWI
BRAZIL	MALAYSIA
BURKINAFASO	MALI
BURUNDI	MAURITANIA
CAMEROON	MAURITIUS
CANADA	MEXICO
CAPEVERDE	MOROCCO
CENTRALAFR	MOZAMBIQUE
CHAD	NAMIBIA
CHILE	NETHERLANDS
CHINA	NEWZEALAND
COLOMBIA	NICARAGUA
COMOROS	NIGERIA
CONGO	NORWAY
COSTARICA	PAKISTAN
CYPRUS	PANAMA
CZECHOSLOVAKIA	PAPUANGUINEA
DENMARK	PARAGUAY
DOMINICANREP	PERU
ECUADOR	PHILIPPINES
EGYPT	PORTUGAL
ELSALVADOR	RWANDA
FIJI	SENEGAL
FINLAND	SEYCHELLES
FRANCE	SINGAPORE
GABON	SOUTHAFRICA
GAMBIA	SPAIN
GERMANYWEST	SRILANKA
GHANA	SWEDEN

GREECE
GUATEMALA
GUINEA
GUINEABISS
GUYANA
HONDURAS
HONGKONG
ICELAND
INDIA
INDONESIA
IRAN
IRELAND
ISRAEL
ITALY
IVORYCOAST
JAMAICA

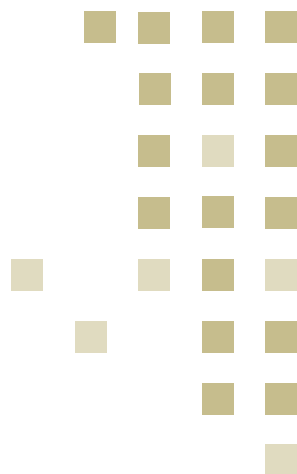
SWITZERLAND
SYRIA
TAIWAN
THAILAND
TOGO
TRINIDAD&TOBAGO
TUNISIA
TURKEY
UGANDA
UK
URUGUAY
USA
VENEZUELA
YUGOSLAVIA
ZAMBIA
ZIMBABWE

Notater | Papers | 2000-2002

No. 606	Leo A. Grünfeld	Foreign Ownership, R&D and Technology Sourcing
No. 607	Leo A. Grünfeld and Lars C. Svindal	Patterns of Trade and Foreign Direct Investment in Africa. A simple test of the new trade theory with multinationals
No. 608	Arne Melchior	Globalisation and industrial location: The impact of trade policy when geography matters
No. 609	Bård Harstad	Integration and Regionalization – a political economic analysis
Nr. 610	Bård Harstad	Forhandlingsmetodikk i WTO. Teoretiske resonnementer
No. 611	Pernille Rieker	Security, integration and identity change
No. 612	Jens Chr. Andvig	Family-controlled Child Labor in Sub-Saharan Africa – A Survey of Research
No. 613	Jens Chr. Andvig	An Essay on Child Labor in Sub-Saharan Africa – A Bargaining Approach
2001		
No. 614	Per Botolf Maurseth	Lovely but dangerous: The impact of patent citations on patent duration
No. 615	Per Botolf Maurseth	Recent Advances in Growth Theory. A Comparison of Neoclassical and Evolutionary Perspectives
No. 616	Bård Harstad	Linking Issues. Should one bargain over two issues simultaneously or separately?
No. 617	Daniel Heradstveit	Local Elites meet Foreign Corporations. The Examples of Iran and Azerbaijan
No. 618	Hege Medin	Firms' export decisions – fixed trade costs and the size of the export market
No. 619	Pernille Rieker	The Europeanisation of Norway's Security Identity
No. 620	Andris Spruds	Political Priorities and Economic Interests in Russian–Latvian Relations
No. 621	Leo A. Grünfeld	Meet Me Halfway but don't Rush. Absorptive capacity and strategic R&D investment revisited
2002		
No. 622	Eric G. Berman	French, UK, and US Policies to Support Peacekeeping in Africa: Current Status and Future Prospects
No. 623	Per Botolf Maurseth	Geography and growth– some empirical evidence



Publikasjoner fra **Norsk Utenrikspolitisk Institutt**



Internasjonal Politikk

Nr. 4 - 2001

Med et abonnement på tidskriftet *Internasjonal Politikk* vil du stille sterkere i ethvert samfunnsfag!

Fenomenet Taliban – fra lokalopprør til storpolitikk
Kristian Berg Harpviken & Arne Strand

EUs legitimitet i norsk politisk liv
Iver B. Neumann

Hvorfor økonomiske sanksjoner virker – tross alt
Jon Hovi

Norge og europeisk sikkerhet – tilpasning til besvær?
Geir Flikke

Bokspalte
Under Evne. Media og Kosovo-konflikten
P. Hammond & E. S. Herman
Anmeldt av Henrik Thune

Seeing Like a State. How Certain Schemes to Improve the Human Condition Have Failed
James C. Scott
Anmeldt av Iver B. Neumann

Abonnementspriser
kr 330 [Norge/Norden]
kr 450 [utenfor Norden]

Enkelthefter
kr 95 pr. hefte + porto/eksp.

Forum for Development Studies

No. 1 - 2001

Forum bringer artikler (på engelsk) om bistandspolitikk, Nord-Sør-forhold og den tredje verden. To nummer i året.

Introduction
Olav Stokke

The Impact of Multi-Party Politics in Sub-Saharan Africa
Nicolas van de Walle

Debate:
The Limits of Clientelism: Multi-Party Politics in Sub-Saharan Africa
Inge Amundsen

What Does Democracy Have to Do with It? van de Walle on Democracy and Economic Growth in Africa
Stein Sundstøl Eriksen

Rejoinder to Inge Amundsen and Stein Sundstøl Eriksen
Nicolas van de Walle

Global Income Distribution 1965–98: Convergence and Marginalisation
Arne Melchior and Kjetil Telle

Understanding Taxation in Poor African Countries: A Critical Review of Selected Perspectives
Ole Therildsen

The Politics of Revenue Mobilisation: Explaining Continuity in Namibian Tax Policies
Lise Rakner

The World Bank and the IMF: Tax, Democracy and Shrinking Aid in Sub-Saharan Africa
Gorm Rye Olsen

Abonnementspriser
NOK 220 [i Norden]
NOK 300 [utenfor Norden]

Enkelthefter
NOK 120 + porto/eksp.

Hvor Hender Det?

Hvor Hender Det? (HHD) er et ukentlig nyhetsbrev som gir deg bakgrunn om internasjonale spørsmål i konsentrert og forenklet form. HHD er det du trenger for øyeblikkelig oppdatering, som en hjelp til å forklare inntrykk og se dem i sammenheng. I mange fag og sammenhenger har vi behov for kortfattet framstilling av konflikter og samarbeid, prosesser, utfordringer og utviklingstrekk i det internasjonale samfunnet. HHD ligger også på Internett. Godt over 100 artikler fra tidligere årganger innenfor en rekke emner er lagt ut i fulltekst. www.nupi.no/pub/hhd/hhdliste.htm.

Abonnementspriser
kr. 250 pr skoleår [2000/2001]
kr. 350 pr skoleår [utenfor Norge]

Klasseabonnement
kr. 70 pr. ab. [min. 10 eks]